

Installing ACE on Windows

Installing ACE on Windows is straight forward. Just doubleclick the ACE_Winstaller.exe and follow the steps. It is however highly recommended to read this guide first.

The installer will create two different things on your harddrive:

ACE.dll – the actual VST plugin

ACE.data – a directory containing resources and preset files

The data directory will commonly be installed into the same location as the VST plugin. You can however move it anywhere you want, even on a different hard drive. When you do so, all you need to do is create a Windows Shortcut (also called a link, with the hidden suffix .lnk) and put that back into the same directory as ACE.dll. make sure to rename that shortcut back to ACE.data. Fortunately the installer alrerady provides for this functionality, so you can browse to any preferred location for presets and data files.

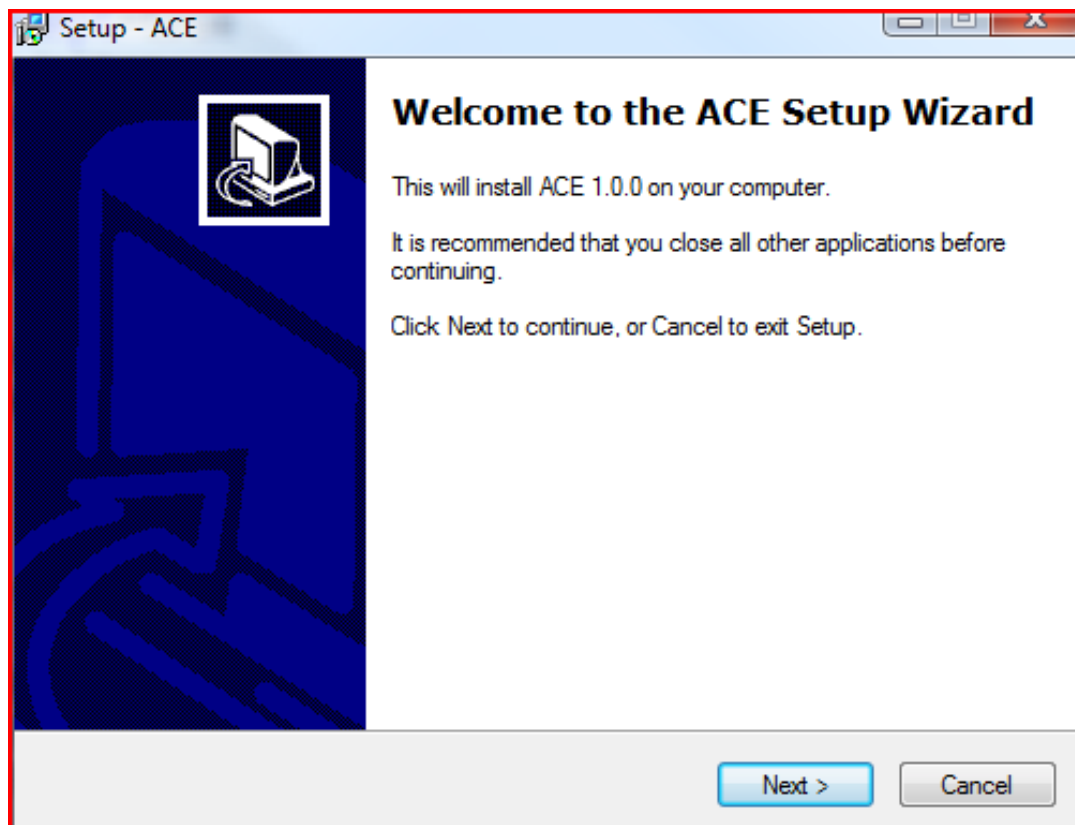
Whenever you load ACE into your VST host application, ACE will first check if it finds ACE.data in the same directory as the .dll. If so, it'll use the information found there. If ACE.data isn't there, it'll try to resolve the link. If that fails too, ACE will still work, but it will neither present you with a user interface nor will it access any presets or registration files. In that case it's best to run the installer again.

Updating ACE

Updating is basically the same as a new installation. You typically install over your existing installation. However, even though the installer is mostly harmless, it's highly recommended that you back up any previous installations of ACE, especially your preset library and your support files.

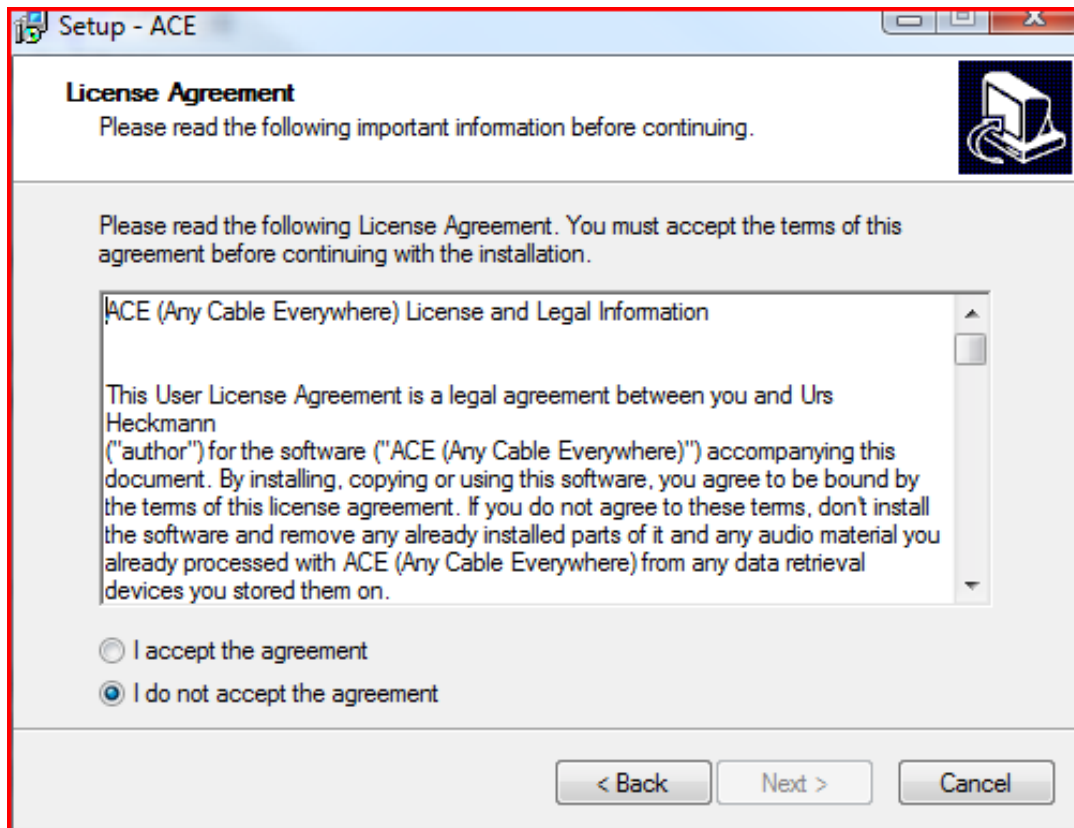
Starting ACE_Winstaller.exe

The first page of the installer tells you about the version number. Click Next.



Accepting the License Agreement

On the second page you're presented with the end user license agreement. You must accept it in order to install & use ACE. It doesn't hurt to read it before doing so.



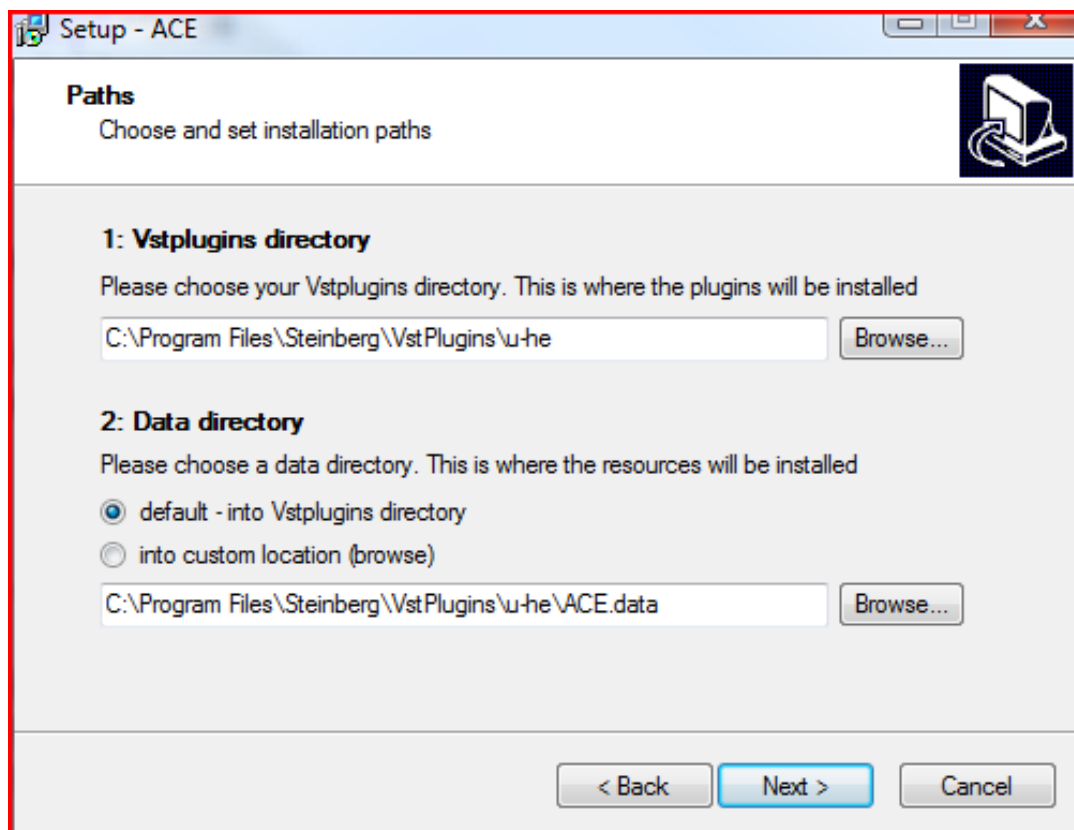
When you're done, click the checkbox „I accept the agreement“. When you do so, you can click Next.

Set up the installation paths

The third page is separated into two sections. In the first section you are asked to browse to your Vstplugins directory into which you want to have ACE installed. On some systems this information will be retrieved from previous installations. If not, then just click Browse and locate your Vstplugins directory.

In the second section you're asked to specify a place to install ACE.data. By default it'll just take up the same directory as ACE.dll. If the installer however finds a previously set up custom location, it'll default to that. This makes updating very easy even if your data folder is moved somewhere else.

If you're a first time user (i.e. you're not updating from a previous version), you can click Browse and choose a location of your preference. The installer will then move all data into that location and create a Windows Shortcut in the Vstplugins directory for you.



Finishing the installation

Click Next after choosing your paths. You will now be presented with a little summary in which you can verify the installation paths. Click Next again to start the actual installation where all files are being copied into their final destination. This may take a few seconds. Once it's done you only need to click Finish to exit the installer.

That's it. Now ACE is installed on your computer and should be visible next time you start your VST host application.

Uninstalling ACE

The installation is very transparent. There are no secret files involved nor any entries in the Registry. Thus to uninstall simply drag ACE.dll and ACE.data into your trash. We're just not sure why anyone would do that ;-)